

# Transboundary Energy Policy: The Influence of the BC Carbon Tax on Washington State's Climate Policy Dialogue

**Will Jones, Stefanie Neale, Thomas Webler  
Western Washington University**

**This research project is funded by the WWU  
Border Policy Research Institute**

# Research Topic and Question

## Topic

- International carbon policy transfer

## Our case study

- How does knowledge and experience with carbon policy in BC influence policy in Washington?

# Justification for the Study



- Urgent need for climate mitigation policy.
- We understand little about how climate policy experiences in one jurisdiction impact another.
- Washington is a natural first mover.
- BC is a source of policy inspiration due to its carbon policy success and proximity to Washington.

# Background



States and provinces have begun taking action.

## Actors in Washington

- CarbonWA
- Alliance for Jobs & Clean Energy
- Department of Ecology

# Policy Transfer

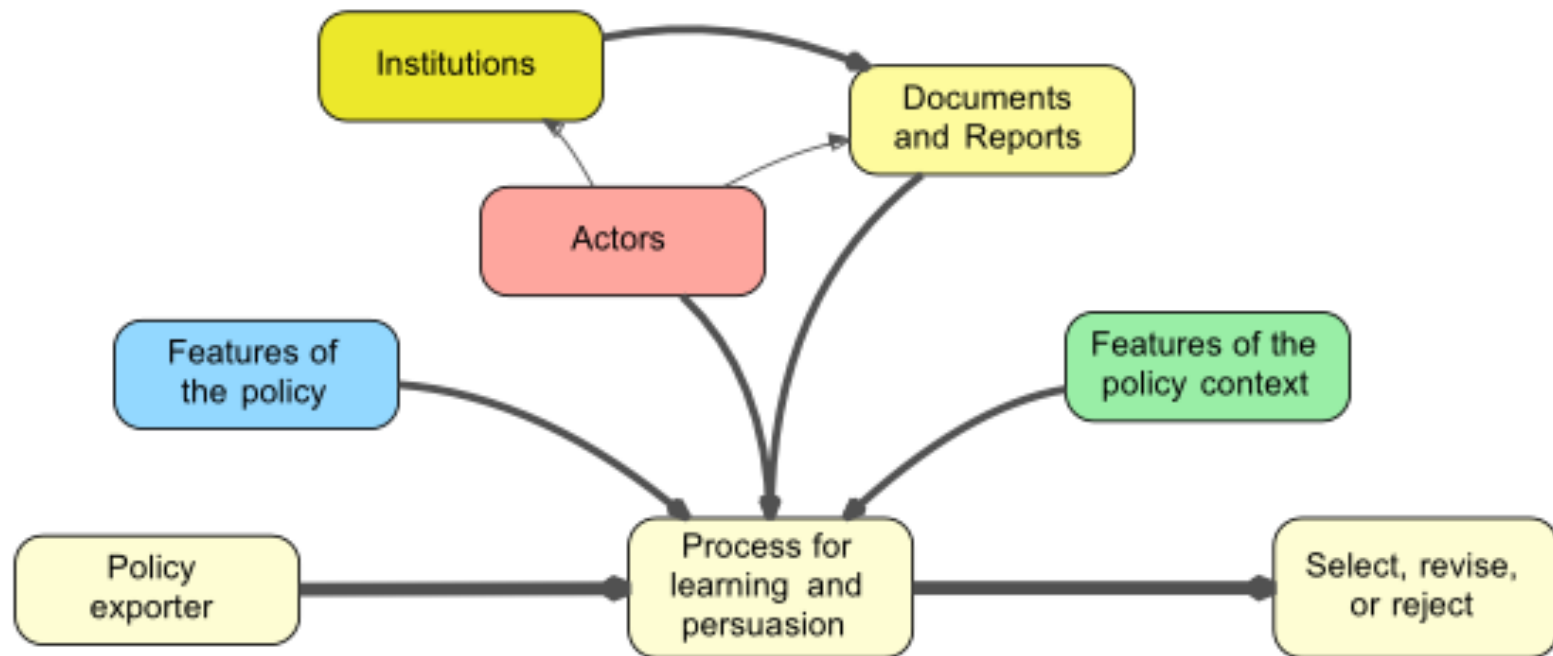
## Definition

- A process in which knowledge about policies in one time and/or place is used in the development of policies in another time and/or place (Dolowitz & Marsh, 1996).

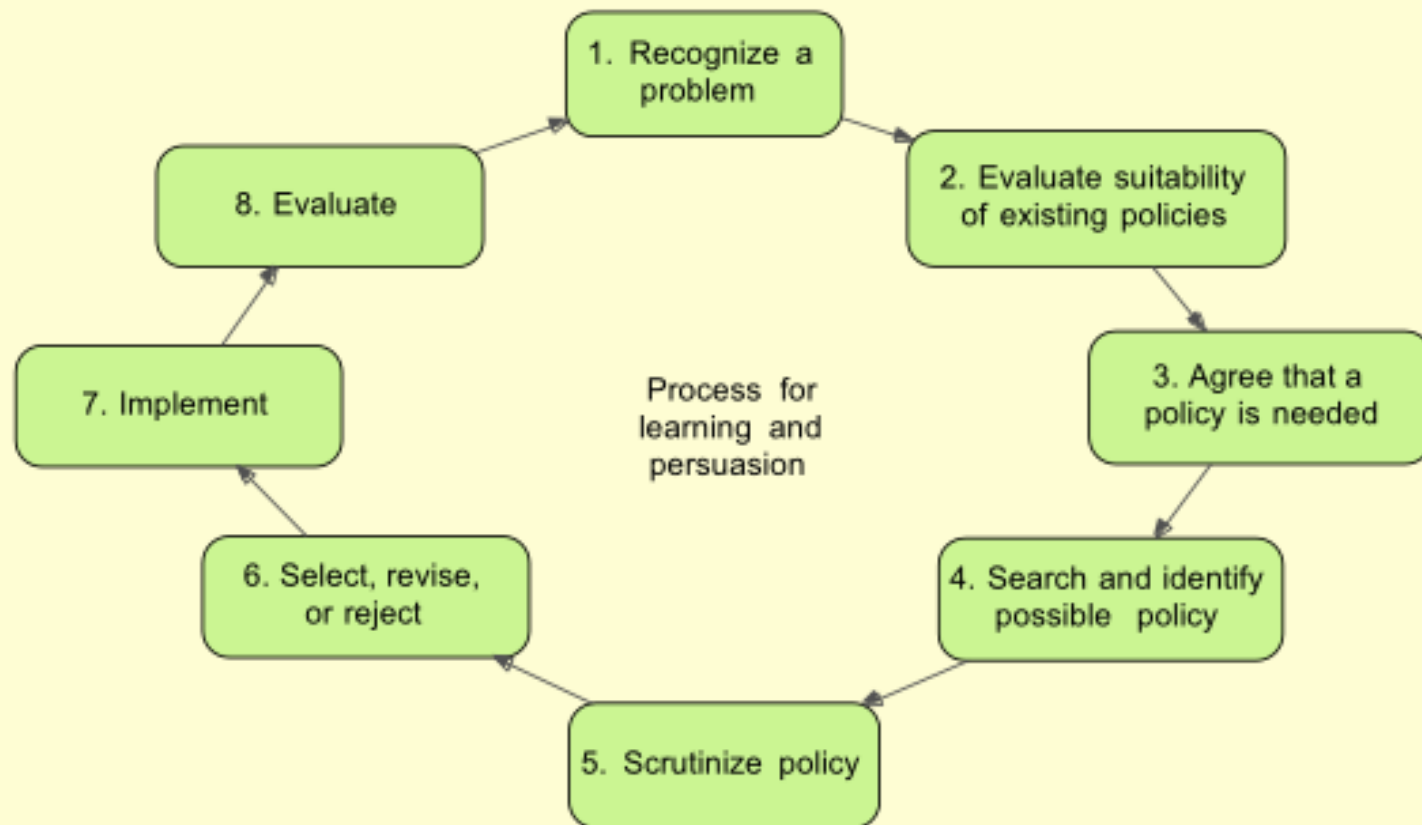
Focus of studies in this field is typically on:

- Subnational entities (state-to-state)
- European Union (nation-to-nation)

# Key Elements in the Policy Transfer Process



# Lesson Drawing Steps



# Methods

## Research Question

- How does knowledge and experience with carbon policy in BC influence policy in Washington?

## Our methods include:

- Interviewing policy actors in BC and WA
- Qualitative coding software to analyze key reports
- Meeting regularly to discuss new findings



# Conclusions on Policy Transfer Theory

The mechanism for policy implementation (public initiative or legislative) shapes the policy learning process:

- Who participates
- Timing and timetable
- The salient topics

# Case Study Results



- Emergent groups played key roles.
- Discussion in WA/BC was both different and similar.
- News stories are emphasized (not reports).
- Rational actors come to different conclusions.

# Conclusions for Carbon Policy



- No clear policy is dominant.
- There is pressure toward uniformity.
- As long as there are successful applications of Carbon Tax and Cap-and-Trade mechanisms, they will continue to compete.

Questions?

The bottom of the slide features a decorative graphic consisting of several overlapping, semi-transparent, light blue wavy lines that create a sense of movement and depth.